



RALSTON CREEK STREETSCAPE DESIGN GUIDELINES

Prepared for the Arvada Urban Renewal Authority

June 2014



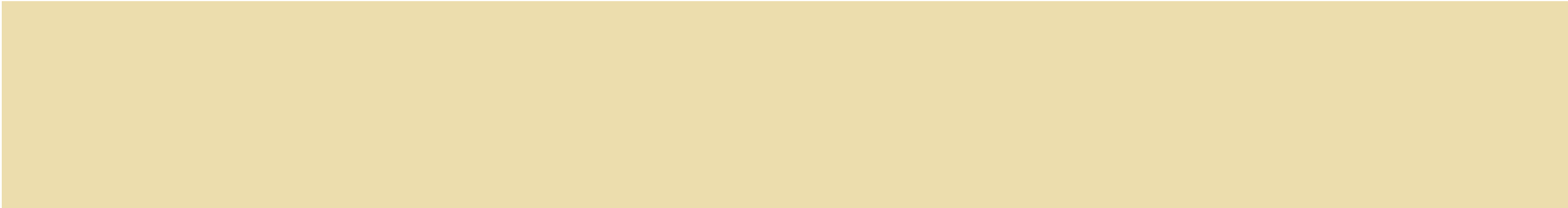
DESIGN GUIDELINE INTRODUCTION	Page 3
STREETSCAPE TYPE A	Page 7
STREETSCAPE TYPE B	Page 11
STREETSCAPE TYPE C	Page 15

TABLE OF CONTENTS

l

STREETSCAPE TYPE D	Page 19
MONUMENTS & CORNER TREATMENT	Page 23
SITE FURNISHINGS & LIGHTING	Page 31
PAVING & SURFACE MATERIALS	Page 35
PLANTINGS	Page 39





Maureen Phair
Executive Director

Clark Walker
Redevelopment Manager



Bob Couri
President

Kristin Cypher
Vice President

Tim Piper
Senior Associate

Chris Cooper
Senior Associate



In the Spring of 2013, the Arvada Urban Renewal Authority initiated the process of establishing the vision for the streetscape treatment within the Arvada Triangle redevelopment area (see banners on page 4). Now called Ralston Creek, the vision and character of the City of Arvada’s next revitalization district has been developed and illustrated in the following Streetscape Design Guidelines. The focus area for the design guidelines extends from Kipling Parkway to Garrison Street along Ralston Road and from just north of King Soopers to West 57th Avenue on Independence Street. In addition, the guidelines include the west side of Garrison Street from the south edge of Ralston Creek to just south of Ralston Road (see key map on page 5).

DESIGN GUIDELINE INTRODUCTION

The purpose of these Streetcape Design Guidelines is to ensure the incremental installation of the proposed streetscape treatment in accordance with the overall vision of Ralston Creek redevelopment area.

WHO SHOULD USE THIS DOCUMENT
This document will serve as supplemental information during an individual parcel site design and used by AURA and the City of Arvada as a development review tool. An applicant wishing to deviate from the approved design guidelines may do so only if it is found through the Development Review Process that the deviation does not deter from the original design intent of the streetscape. Any instances of conflict between the City of Arvada code and these guidelines must be resolved at the time of development review.

HOW TO USE THIS DOCUMENT
The intent of this document is to clearly identify the vision, layout and materialialty of the various streetscape treatment types within the Ralston Creek redevelopment area. To identify conditions for your specific project, please follow the following steps:

- 1 Using the provided key map, locate the section of the book corresponding to your specific development location. The proposed streetscape treatments have been divided into four (4) types, A through D.
- 2 Review the provided plans for your particular streetscape condition, identifying such elements as site furnishings, paving or planting features that correspond to your location. Locate the names of those features in the table at the bottom of the page.
- 3 For each feature listed, such as proposed site furnishings, lighting, paving, surface material and plantings, there is additional information and specifications provided.
- 4 For information regarding gateway monuments and specialty corner treatment along Ralston Road, please see the MONUMENTS & CORNER TREATMENT section beginning on page 23.





Urban Design & Streetscape Improvements

RALSTON ROAD CORRIDOR

Urban Design & Streetscape Improvements

RALSTON ROAD CORRIDOR

Project Description

The goal of the Ralston Road corridor improvements is to create a memorable sense of place for the URA project area, while also improving pedestrian connections and walkability within the district. Drawing from both past planning efforts and the history and culture of Arvada, the proposed streetscape and urban design improvements reflect an emphasis on the strong lines and simple beauty of farming and agriculture. Along the street, bands of ornamental planting beds mirror field rows, and proposed signage and monumentation features include stylized field grass accents. Working within the public right of way, the urban design improvements help establish a unique and compelling identity for the Ralston Fields urban renewal area.

Overall Project Area Keymap

Design Reference Imagery

BRITINA DESIGN GROUP Urban Design & Streetscape Improvements

RALSTON ROAD CORRIDOR

SECTION B-B'

BRITINA DESIGN GROUP Urban Design & Streetscape Improvements

RALSTON ROAD CORRIDOR

SECTION A-A'

Urban Design & Streetscape Improvements

RALSTON ROAD CORRIDOR

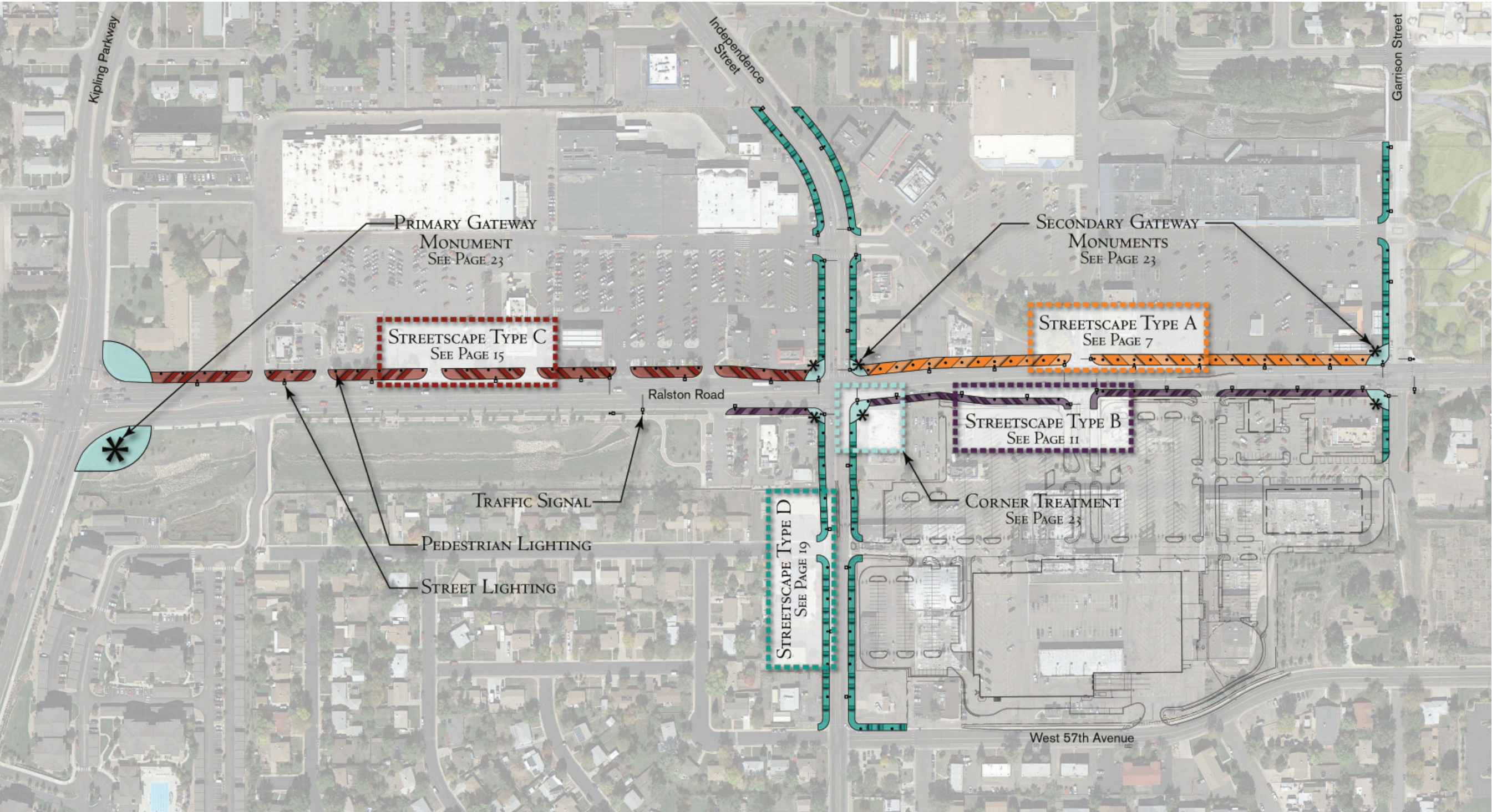
Gateway Monument & Low Accent Wall

Directional District Monumentation

Intersection Corner Monumentation

Low Accent Wall

Nighttime View (showing illumination)



- Key Map Notes:**
- The above diagram is conceptual in nature and for reference purposes only. The intent of the diagram is to acquaint the guideline reviewer with the various streetscape types and overall design patterns, including proposed lighting locations.
 - Any proposed changes to roadways, intersections, traffic signals and/or driveway locations from existing conditions shall be reviewed and approved by AURA and the City of Arvada prior to implementation.
 - See Ralston Road Conceptual Engineering Study (Draft dated March 2014) and City of Arvada Engineering Code of Standards & Specifications for additional information and requirements.





Located along the north side of Ralston Road between Independence Street and Garrison Street, Streetscape Type A provides a strongly modern and urban streetscape feel to the Ralston Creek development area. The proposed 25' wide streetscape area provides ample room for strolling, mingling and outdoor seating areas. Large swaths of angled paving bands, alternating from concrete pavers to colored concrete paving, are highlighted by linear raised planters containing street trees, ornamental grasses and shrubs. Pedestrian lighting, street lighting, planter pots, benches and trash receptacles are located at regular intervals along the corridor to further enhance the linear plaza-like feel of the streetscape. Also, intersections are highlighted with the use of specialty paving and planter pots.

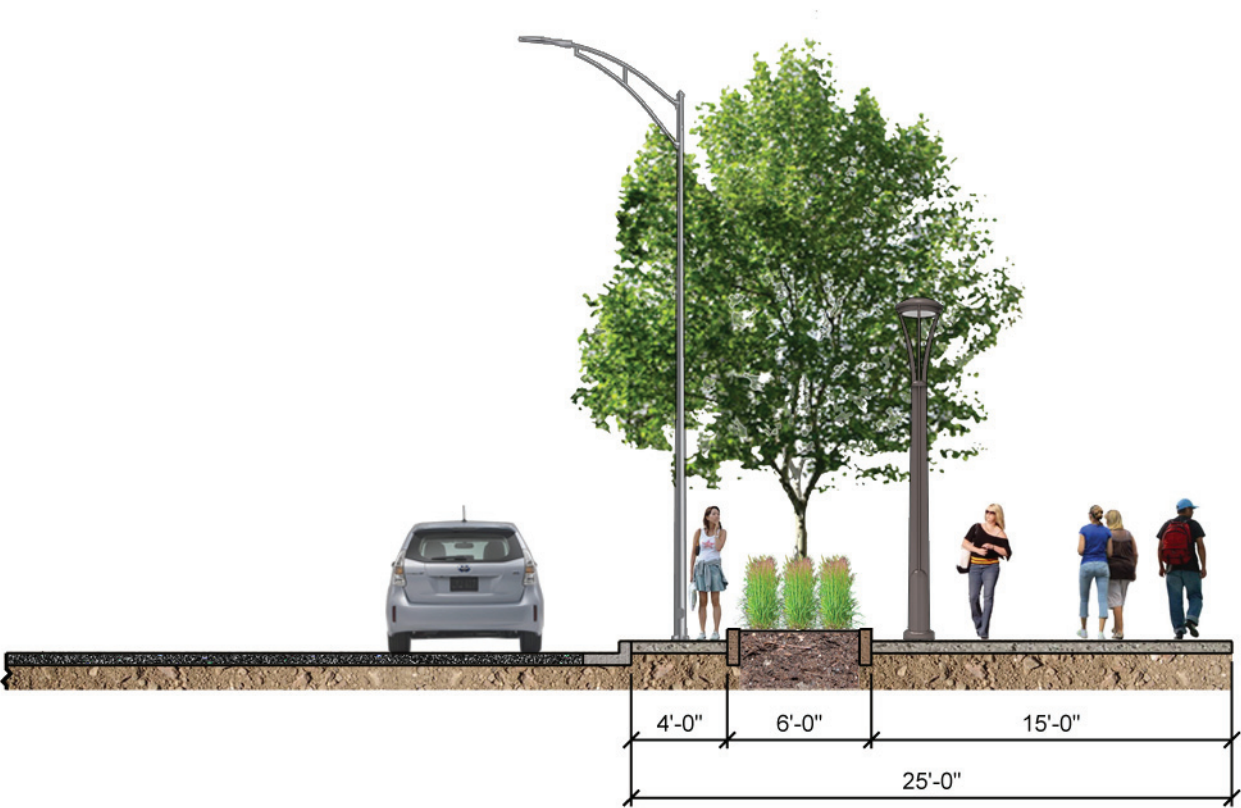
STREETSCAPE TYPE A

RALSTON ROAD NORTH STREETSCAPE TREATMENT EAST OF INDEPENDENCE STREET

7

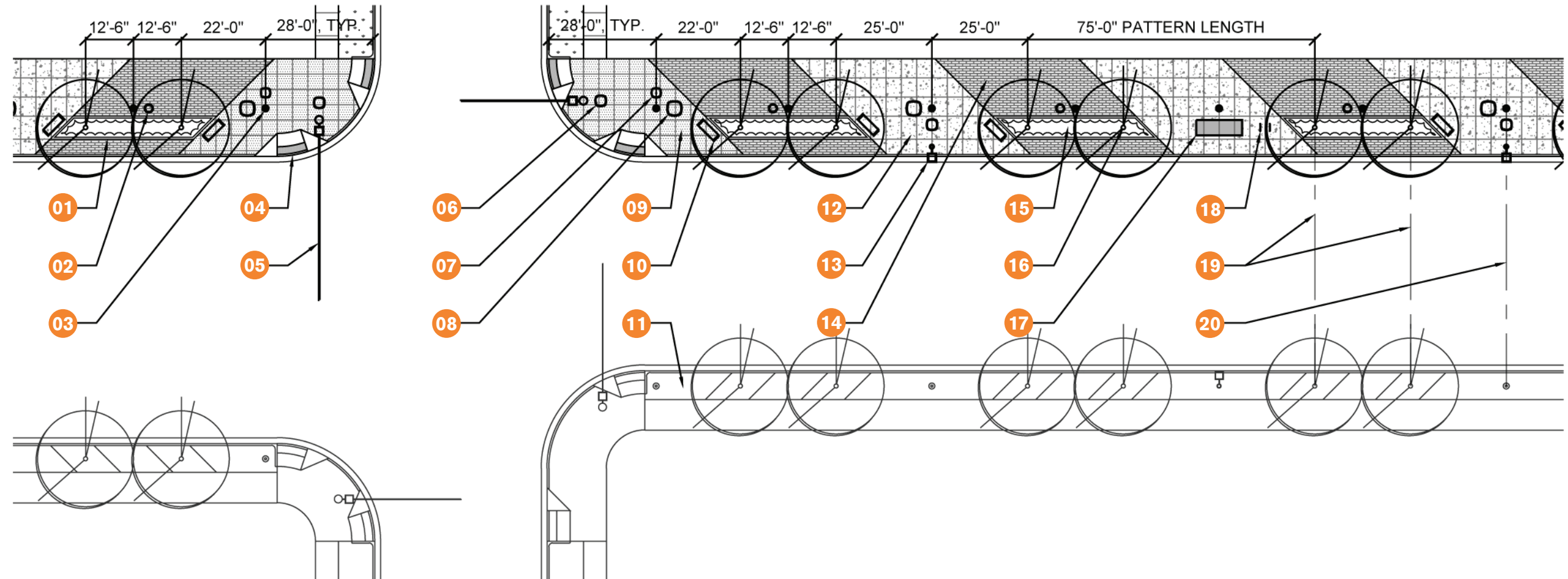
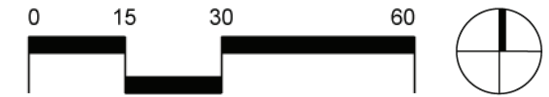
GENERAL NOTES:

- 1. An automatic irrigation system is required for all trees, planting beds and planter pots.
- 2. Electrical service is required for all pedestrian lighting and street lighting.
- 3. The proposed street tree, pedestrian lighting and street lighting locations establish the overall pattern of the streetscape treatment and ultimately determine the final locations of the ground plane elements.



Streetscape Type A Typical Plan

1"=30'-0"



01	Colored Concrete Planter Curb	paving & surface materials section page 35
02	Trash Receptacle	site furnishings & lighting section page 31
03	Pedestrian Lighting	site furnishings & lighting section page 31
04	Concrete Curb Ramp (with detectable warning)	per city of arvada engineering code of standards & specifications
05	Traffic Signal	per city of arvada standards
06	Planter Pot Type 2	site furnishings & lighting section page 31
07	Planter Pot Type 1	site furnishings & lighting section page 31
08	Planter Pot Type 3	site furnishings & lighting section page 31
09	Colored Concrete Paving Type 1 (4' x 4' score pattern)	paving & surface materials section page 35
10	Bench Type 2	site furnishings & lighting section page 31

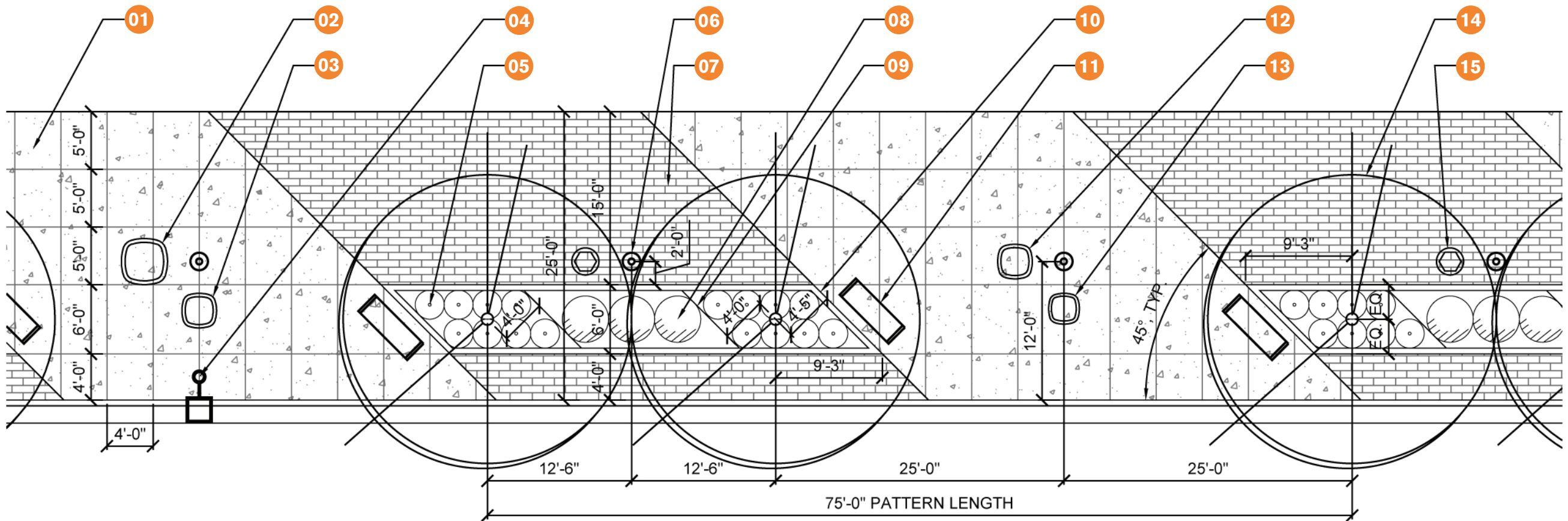
11	Ralston Road South Streetscape Treatment	streetscape type b section page 11
12	Colored Concrete Paving Type 2 (score pattern as shown)	paving & surface materials section page 35
13	Street Lighting	site furnishings & lighting section page 31
14	Concrete Paver Type 1 through 3	paving & surface materials section page 35
15	Planting Bed	streetscape type a enlargement plan page 9
16	Street Trees	streetscape type a enlargement plan page 9
17	Bus Stop Shelter	per RTD & city of arvada standards
18	Bike Rack	site furnishings & lighting section page 31
19	Align Trees on both Sides of Roadway	
20	Align Street Lighting & Pedestrian Lighting on both Sides of Roadway	





Streetscape Type A Enlargement Plan

1"=10'-0"



01	Colored Concrete Paving Type 2 (score pattern as shown)	paving & surface materials section page 35
02	Planter Pot Type 3	site furnishings & lighting section page 31
03	Planter Pot Type 2	site furnishings & lighting section page 31
04	Street Lighting	site furnishings & lighting section page 31
05	Blue Avena Grass (both ends of planter)	plantings section page 39
06	Pedestrian Lighting	site furnishings & lighting section page 31
07	Concrete Paver Type 1 through 3	paving & surface materials section page 35
08	Arctic Fire Dogwood	plantings section page 39

09	Steel Edging	
10	Colored Concrete Planter Curb	paving & surface materials section page 35
11	Bench Type 2	site furnishings & lighting section page 31
12	Planter Pot Type 2	site furnishings & lighting section page 31
13	Planter Pot Type 1	site furnishings & lighting section page 31
14	Autumn Blaze Pear	plantings section page 39
15	Trash Receptacle	site furnishings & lighting section page 31



10

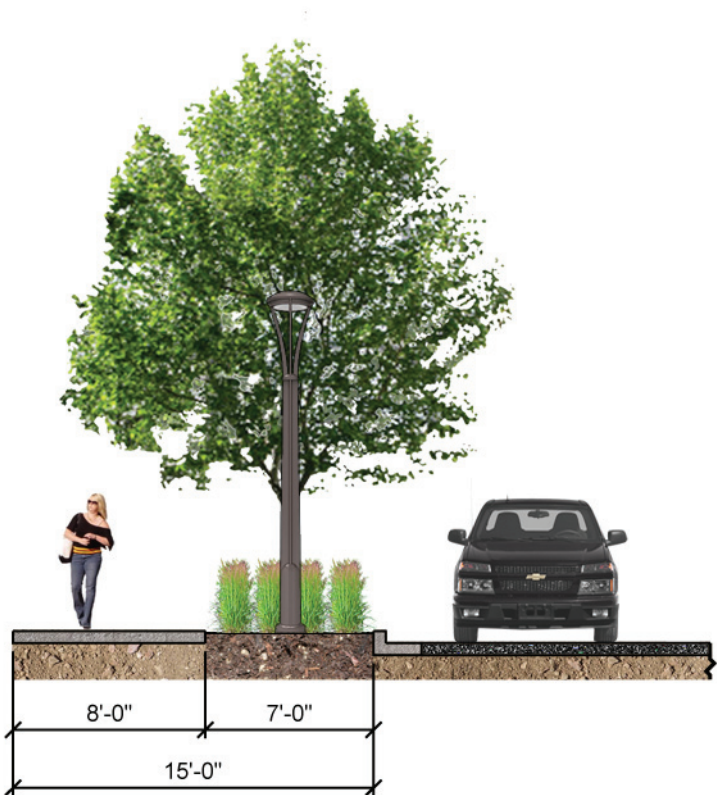


Located along the south side of Ralston Road west of Garrison Street, Streetscape Type B mimics the angled theme of Streetscape Type A but on a smaller and more intimate scale. The proposed 15’ wide streetscape area contains an 8’ detached sidewalk with extensive plantings between the sidewalk and roadway. The planting area contains alternating angled swaths of ornamental grasses, crusher fine bands and shrubs with regularly spaced groupings of street trees, pedestrian lighting and street lighting. Also, intersections are highlighted with the use of specialty paving.

STREETSCAPE TYPE B

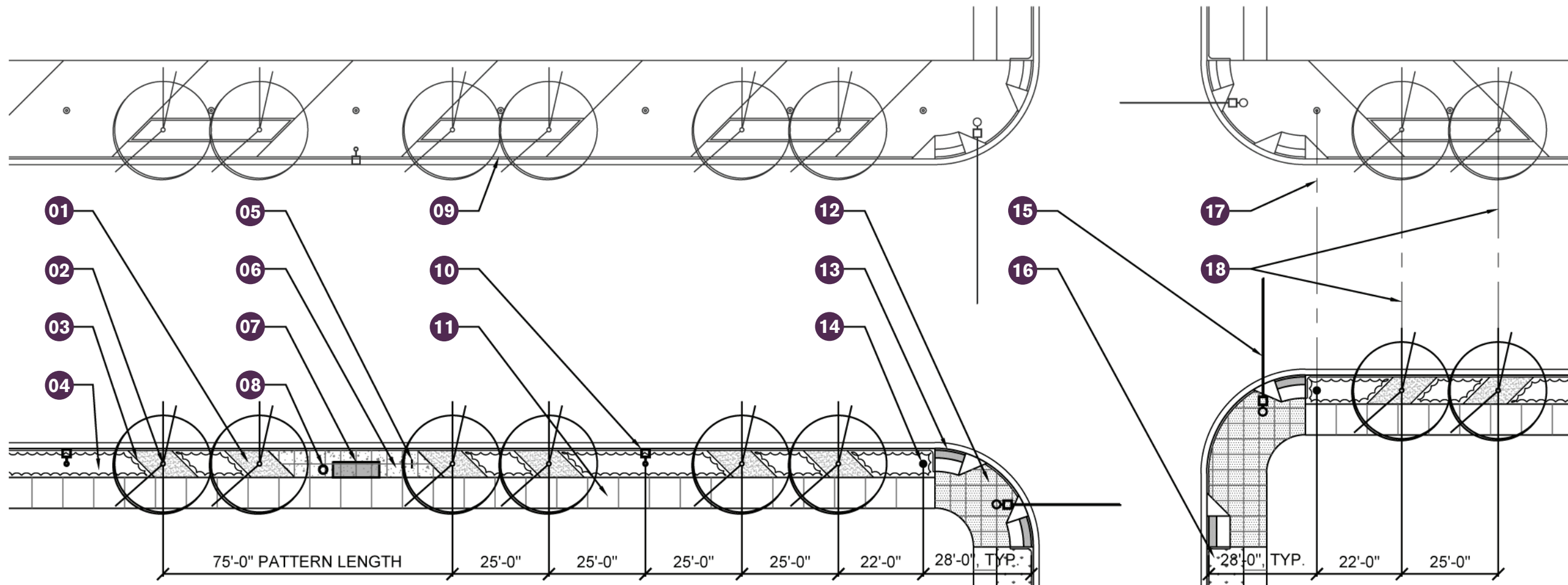
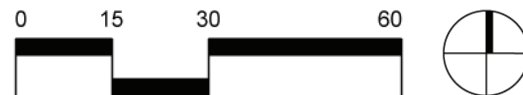
RALSTON ROAD SOUTH STREETSCAPE TREATMENT WEST OF GARRISON STREET

- GENERAL NOTES:
- 1. An automatic irrigation system is required for all trees, planting beds and planter pots.
 - 2. Electrical service is required for all pedestrian lighting and street lighting.
 - 3. The proposed street tree, pedestrian lighting and street lighting locations establish the overall pattern of the streetscape treatment and ultimately determine the final locations of the ground plane elements.



Streetscape Type B Typical Plan

1"=30'-0"



01	Crusher Fines	paving & surface materials section page 35
02	Street Trees	streetscape type b enlargement plan page 13
03	Steel Edging	
04	Planting Bed	streetscape type b enlargement plan page 13
05	Bike Rack	site furnishings & lighting section page 31
06	Colored Concrete Paving Type 2 (3'-6" x 4' score pattern)	paving & surface materials section page 35
07	Bus Stop Shelter	per RTD & city of arvada standards
08	Trash Receptacle	site furnishings & lighting section page 31
09	Ralston Road North Streetscape Treatment	streetscape type a section page 7

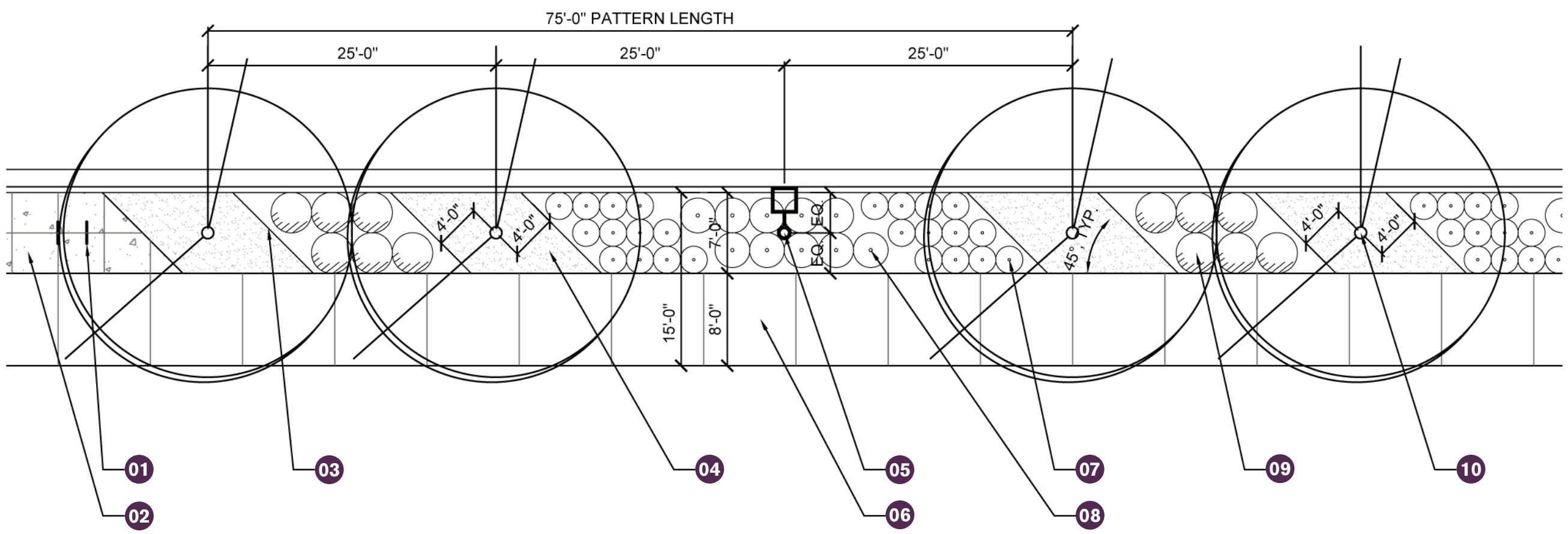
10	Street Lighting	site furnishings & lighting section page 31
11	Standard Concrete Paving (8' score pattern)	paving & surface materials section page 35
12	Colored Concrete Paving Type 1 (4' x 4' score pattern)	paving & surface materials section page 35
13	Concrete Curb Ramp (with detectable warning)	per city of arvada engineering code of standards & specifications
14	Pedestrian Lighting	site furnishings & lighting section page 31
15	Traffic Signal	per city of arvada standards
16	Existing and/or Undetermined Landscape Area	
17	Align Street Lighting & Pedestrian Lighting on both Sides of Roadway	
18	Align Trees on both Sides of Roadway	





Streetscape Type B Enlargement Plan

1"=10'-0"



01	Bike Rack	site furnishings & lighting section page 31
02	Colored Concrete Paving Type 2 (3'-6" x 4' score pattern)	paving & surface materials section page 35
03	Steel Edging	
04	Crusher Fines	paving & surface materials section page 35
05	Street Lighting	site furnishings & lighting section page 31

06	Standard Concrete Paving (8' score pattern)	paving & surface materials section page 35
07	Mexican Feather Grass (both ends of planting bed)	plantings section page 39
08	Feather Reed Grass	plantings section page 39
09	Anthony Waterer Spirea	plantings section page 39
10	Autumn Blaze Pear	plantings section page 39



14



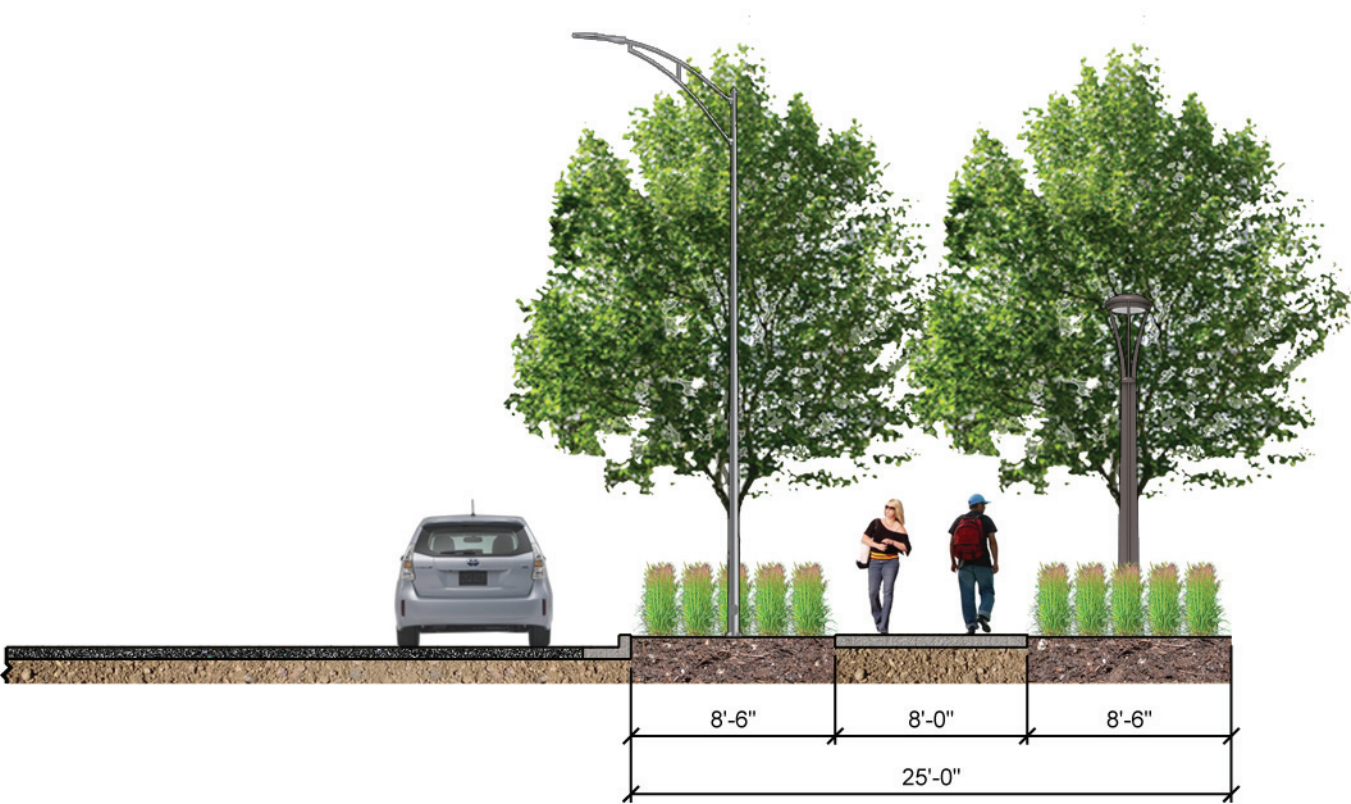
Located along the north side of Ralston Road between Kipling Parkway and Independence Street, Streetscape Type B provides a visually enticing and pedestrian friendly edge to the Ralston Creek development area. The proposed 25' wide streetscape area is bisected by an 8' sidewalk, while all the other areas within the streetscape are to be extensively planted with alternating angled swaths of ornamental grasses, crusher fine bands and shrubs. Regularly spaced groupings of street trees, pedestrian lighting, street lighting and a occasional small seating areas with benches and trash receptacles complete this streetscape scene. Intersections are highlighted with the use of specialty paving and planter pots.

STREETSCAPE TYPE C

RALSTON ROAD NORTH STREETSCAPE TREATMENT WEST OF INDEPENDENCE STREET

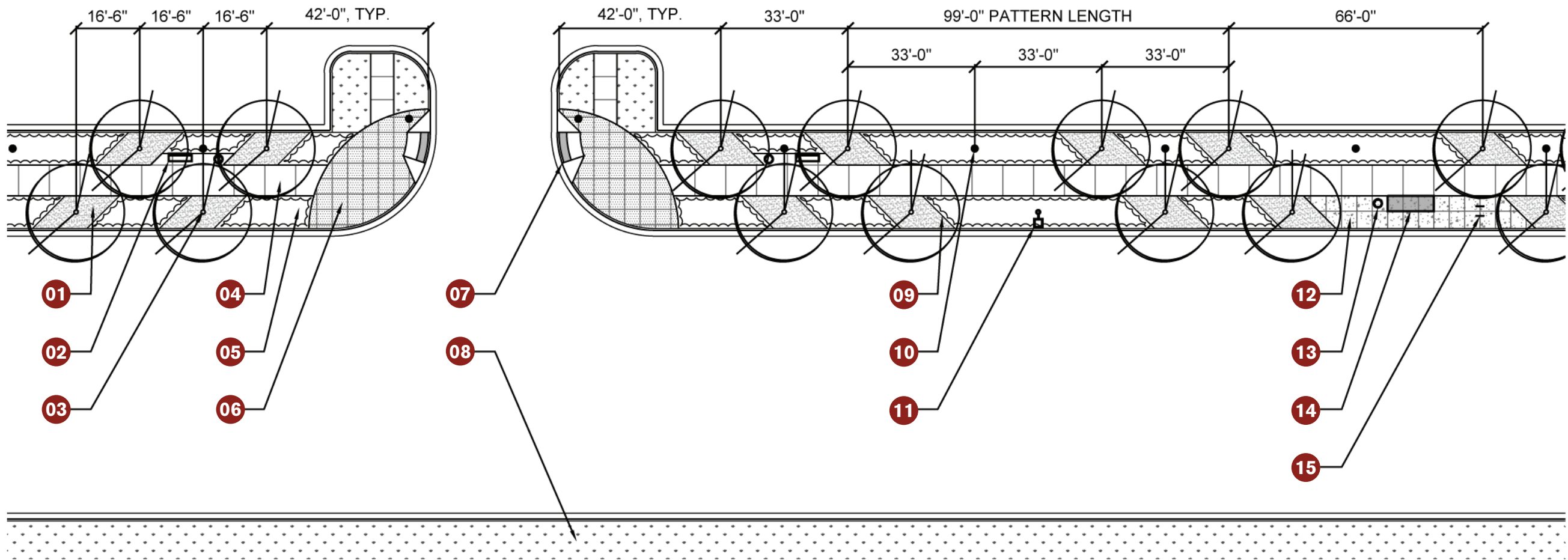
15

- GENERAL NOTES:
- 1. An automatic irrigation system is required for all trees, planting beds and planter pots.
 - 2. Electrical service is required for all pedestrian lighting and street lighting.
 - 3. The proposed street tree, pedestrian lighting and street lighting locations establish the overall pattern of the streetscape treatment and ultimately determine the final locations of the ground plane elements.



Streetscape Type C Typical Plan

1"=30'-0"



01	Crusher Fines	paving & surface materials section page 35
02	Bench Type 1	site furnishings & lighting section page 31
03	Street Trees	streetscape type c enlargement plan page 17
04	Standard Concrete Paving (8' score pattern)	paving & surface materials section page 35
05	Planting Bed	streetscape type c enlargement plan page 17
06	Colored Concrete Paving Type 1 (4' x 4' score pattern)	paving & surface materials section page 35
07	Concrete Curb Ramp (with detectable warning)	per city of arvada engineering code of standards & specifications
08	Existing and/or Undetermined Landscape Area	

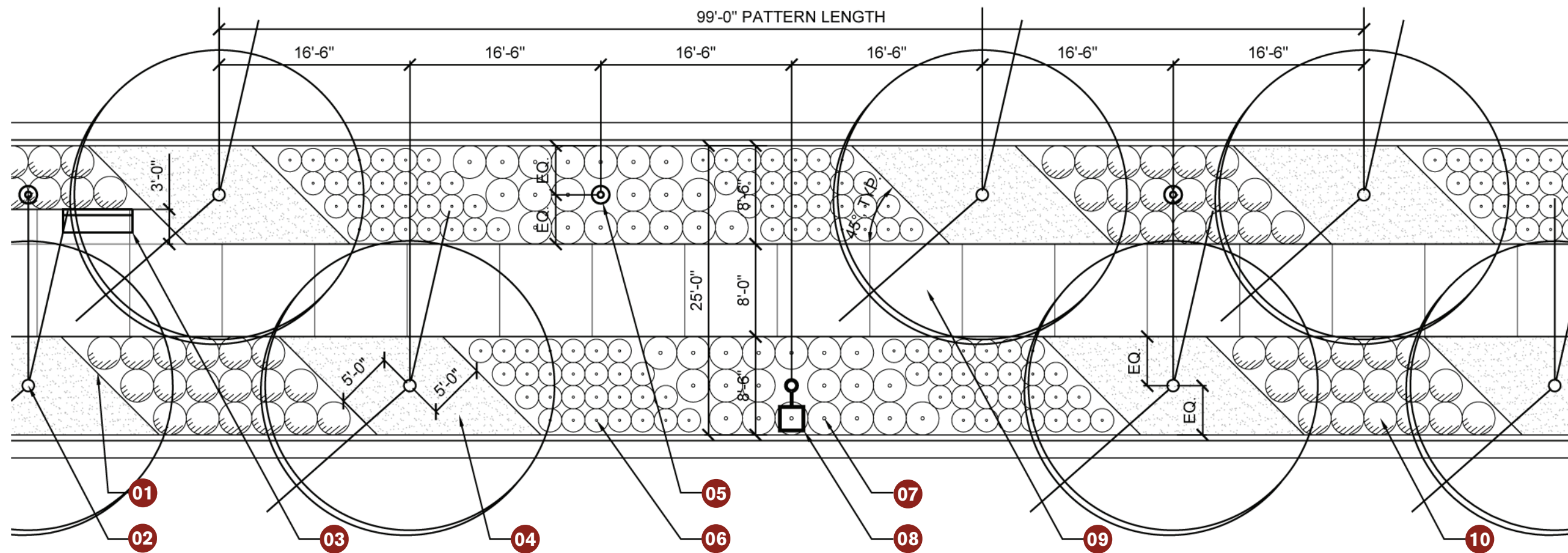
09	Steel Edging	
10	Pedestrian Lighting	site furnishings & lighting section page 31
11	Street Lighting	site furnishings & lighting section page 31
12	Colored Concrete Paving Type 2 (3'-6" x 4' score pattern)	paving & surface materials section page 35
13	Trash Receptacle	site furnishings & lighting section page 31
14	Bus Stop Shelter	per RTD & city of arvada standards
15	Bike Rack	site furnishings & lighting section page 31





Streetscape Type C Enlargement Plan

1"=10'-0"



01	Steel Edging	
02	Autumn Blaze Pear	plantings section page 39
03	Bench Type 1	site furnishings & lighting section page 31
04	Crusher Fines	paving & surface materials section page 35
05	Pedestrian Lighting	site furnishings & lighting section page 31

06	Boulder Blue Fescue (both ends of planting bed)	plantings section page 39
07	Feather Reed Grass	plantings section page 39
08	Street Lighting	site furnishings & lighting section page 31
09	Standard Concrete Paving (8' score pattern)	paving & surface materials section page 35
10	First Choice Blue Mist Spirea	plantings section page 39



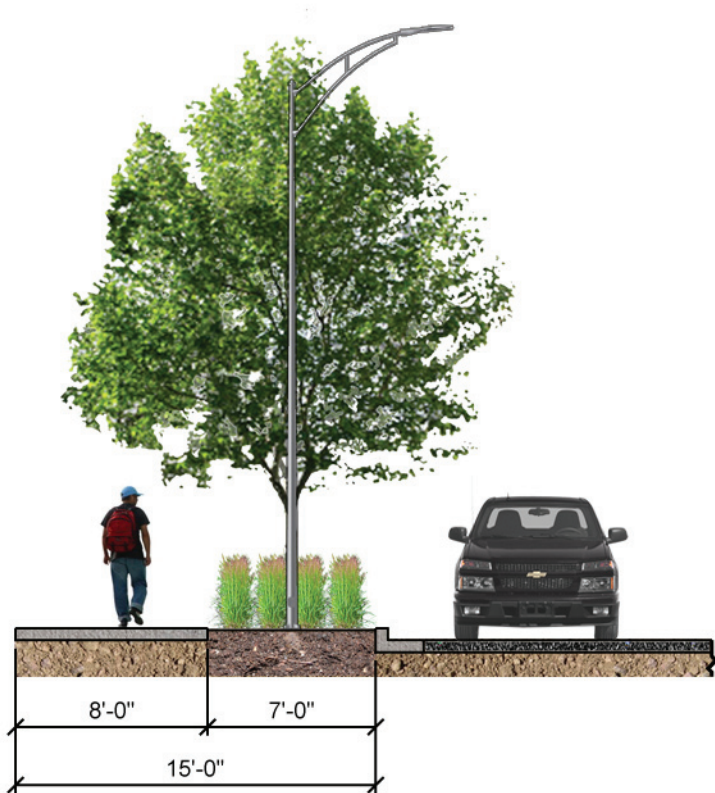


Located along either side of Independence Street from north of King Soopers to West 57th Avenue as well as on the west side of Garrison Street from Ralston Creek to just south of Ralston Road, Streetscape Type D mimics the feel and design of Streetscape Type B with perpendicular banding of plant material instead of angled banding. The proposed 15’ wide streetscape area contains an 8’ detached sidewalk with extensive plantings between the sidewalk and roadway. The planting area contains alternating swaths of ornamental grasses, crusher fine bands and shrubs with regularly spaced groupings of street trees, pedestrian lighting and street lighting. Intersections are highlighted with the use of specialty paving.

STREETSCAPE TYPE D

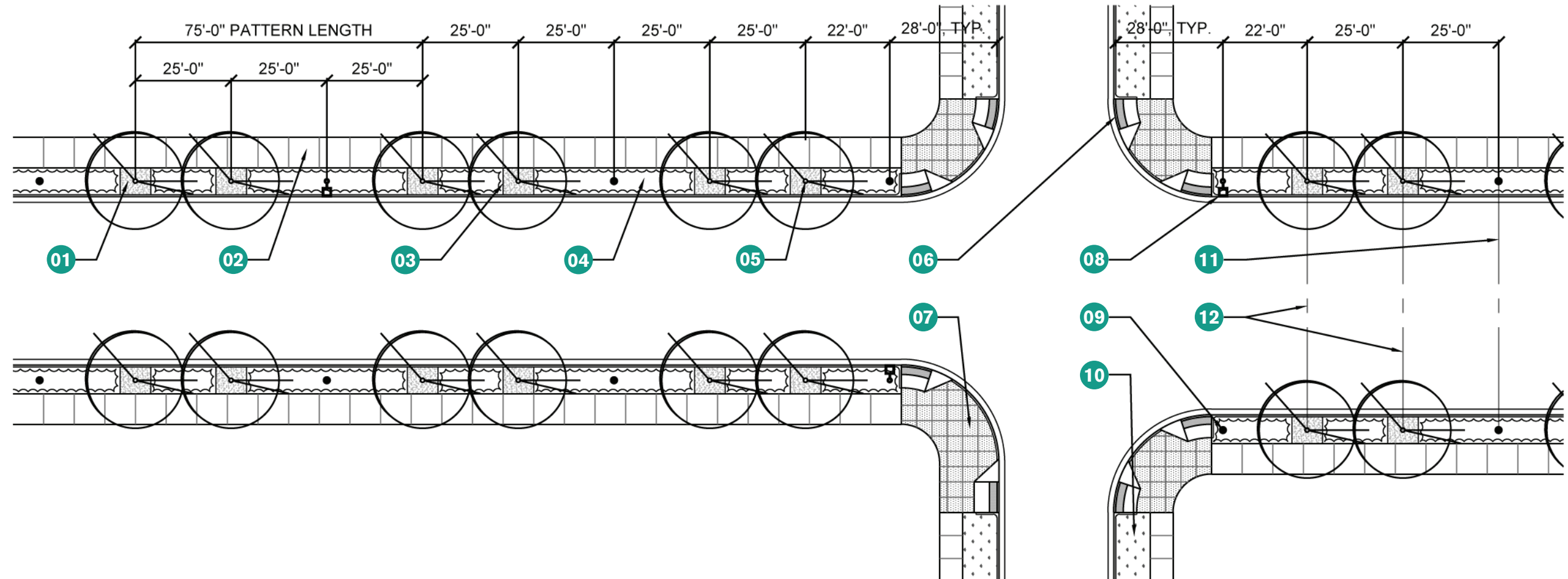
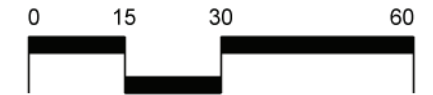
INDEPENDENCE STREET, GARRISON STREET & WEST 57TH AVENUE

- GENERAL NOTES:
- 1. An automatic irrigation system is required for all trees, planting beds and planter pots.
 - 2. Electrical service is required for all pedestrian lighting and street lighting.
 - 3. The proposed street tree, pedestrian lighting and street lighting locations establish the overall pattern of the streetscape treatment and ultimately determine the final locations of the ground plane elements.



Streetscape Type D Typical Plan

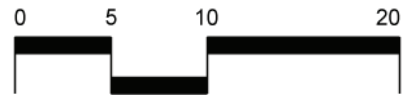
1"=30'-0"



01	Crusher Fines	paving & surface materials section page 35
02	Standard Concrete Paving (8' score pattern)	paving & surface materials section page 35
03	Steel Edging	
04	Planting Bed	streetscape type d enlargement plan page 21
05	Street Trees	streetscape type d enlargement plan page 21
06	Concrete Curb Ramp (with detectable warning)	per city of arvada engineering code of standards & specifications

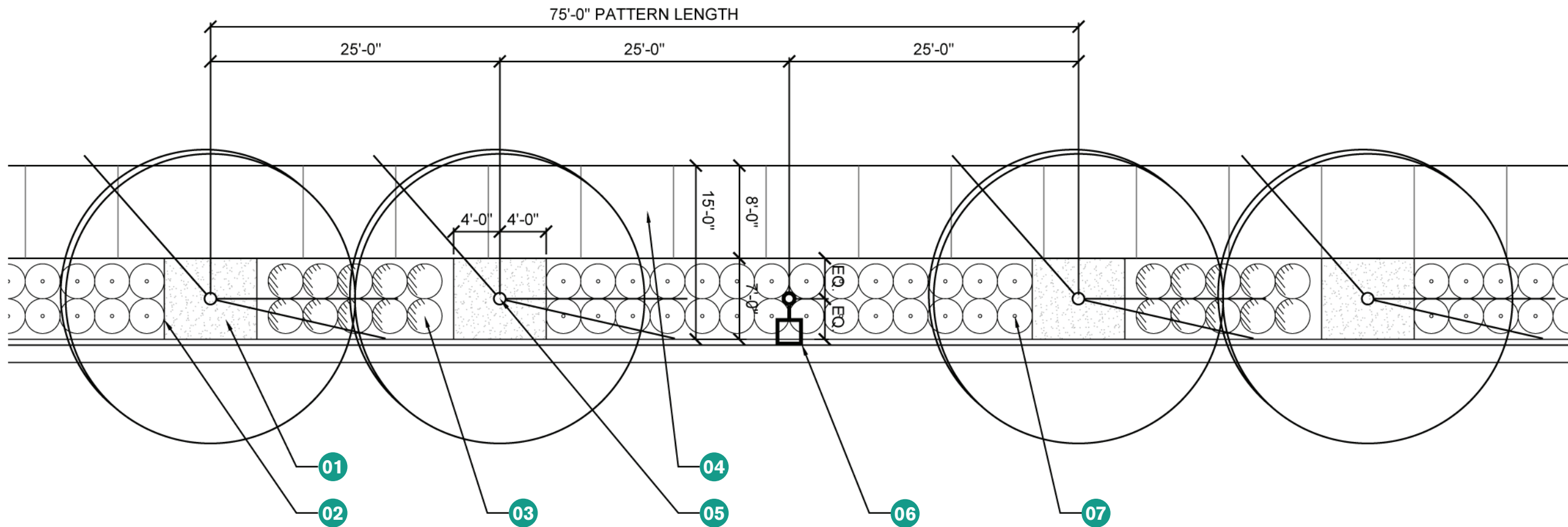
07	Colored Concrete Paving Type 1 (4' x 4' score pattern)	paving & surface materials section page 35
08	Street Lighting	site furnishings & lighting section page 31
09	Pedestrian Lighting	site furnishings & lighting section page 31
10	Existing and/or Undetermined Landscape Area	
11	Align Street Lighting & Pedestrian Lighting on both Sides of Roadway	
12	Align Trees on both Sides of Roadway	





Streetscape Type D Enlargement Plan

1"=10'-0"



- | | |
|---|--|
| 01 Crusher Fines | paving & surface materials section page 35 |
| 02 Steel Edging | |
| 03 Globe Russian Peashrub | plantings section page 39 |
| 04 Standard Concrete Paving (8' score pattern) | paving & surface materials section page 35 |

- | | |
|---|---|
| 05 European Horbeam (Independence Street) or Red Oak (Garrison Street) | plantings section page 39 |
| 06 Street Lighting | site furnishings & lighting section page 31 |
| 07 Blaze Little Bluestem Grass | plantings section page 39 |





Located at both the intersection of Ralston Road and Independence Street and Ralston Road and Garrison Street, the proposed corner treatment for the secondary gateway monument feature includes a larger specialty paving area with planter pots. In addition, two secondary gateway monuments shall be located at each corner. Ornamental trees and a planting bed with a mixture of ornamental grasses and shrubs will serve as a backdrop to the monuments.

The primary gateway monument will be located at the corner of Ralston Road and Kipling Parkway. A conceptual design for the corner landscape treatment was illustrated as part of the streetscape visioning process in the Spring of 2013 (see banners on page 4). In addition, the design for the tenant sign monument has been

MONUMENTS & CORNER TREATMENT

23

included in this section of the design guidelines. Prospective owners/developers can submit variations on the sign design as part of the AURA and City of Arvada development review process. However, applicants are responsible for maintaining the overall character, materiality and details of the monuments in an effort to unify the identity of the Ralston Creek redevelopment area.

GENERAL NOTES:

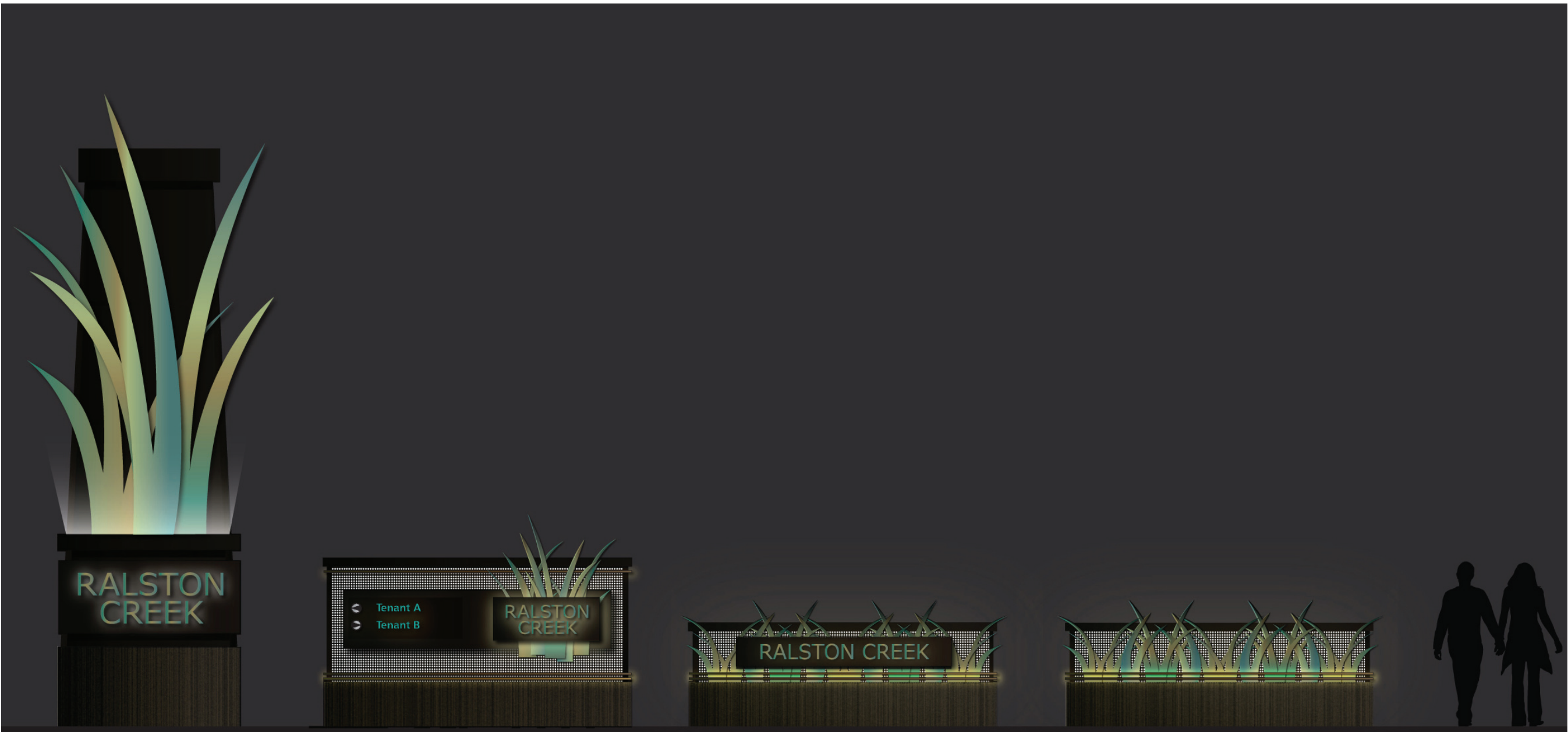
1. Submit structural stamped shop drawings of all monument elements and connection details for review and approval prior to fabrication.
2. Submit material, color and finish samples for review and approval prior to fabrication.
3. Unless otherwise noted, all monument elements to be aluminum and all exterior components are to be powder coated to match Landscape Forms bronze.
4. Weld and grind smooth all connections prior to fabrication.
5. All monument electrical components to be UL listed.
6. All monument lighting to be LED.
7. All signage font to be Meiryo UI Regular.
8. An automatic irrigation system is required for all trees, planting beds and planter pots.
9. Electrical service is required for all monuments, pedestrian lighting and street lighting.



Monuments - Daytime View

24





Primary Gateway
Monument
See Page 26

Tenant Sign
Monument
See Page 27

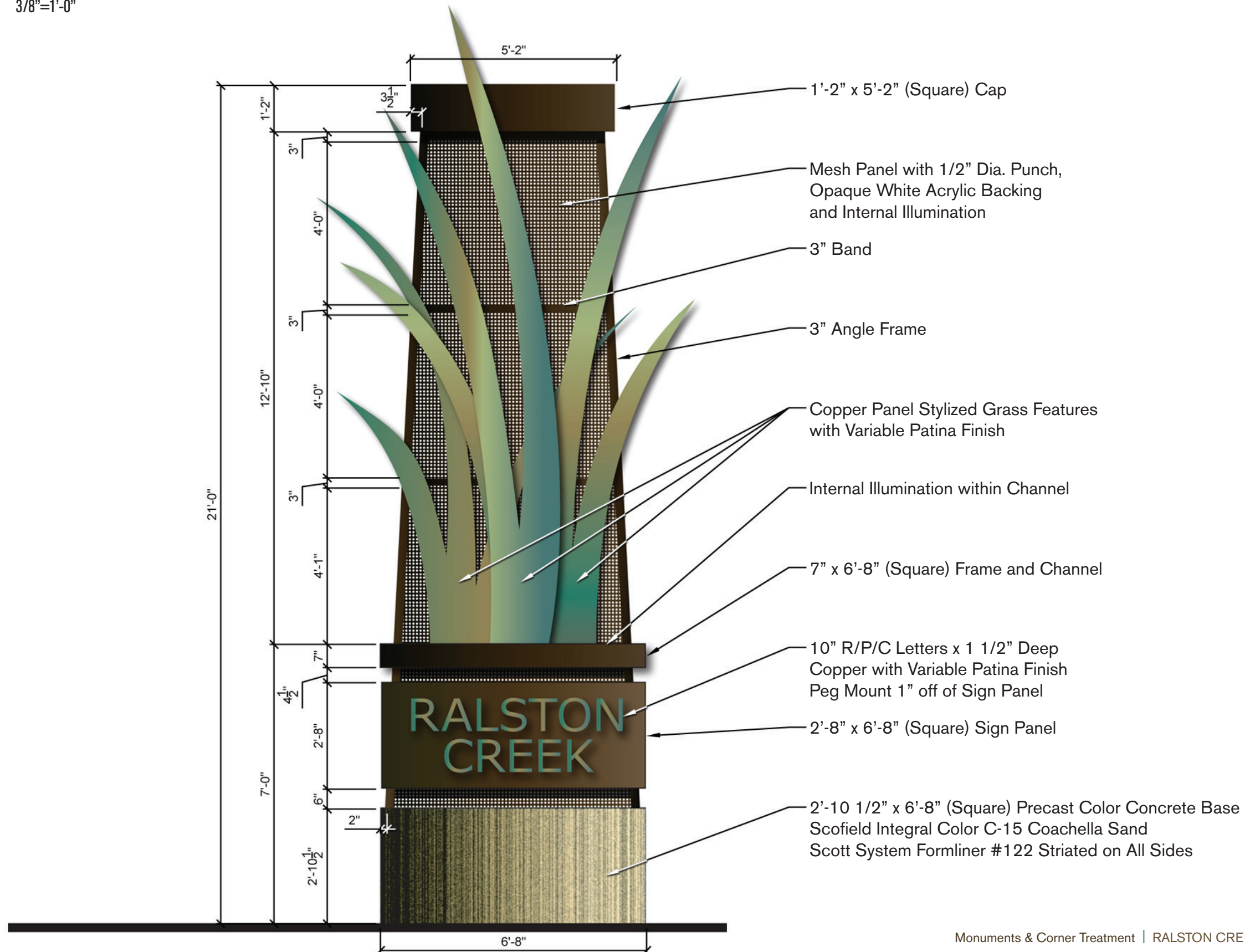
Secondary Gateway
Monument
Accent Wall with Sign Panel
See Page 28

Accent Wall without Sign Panel



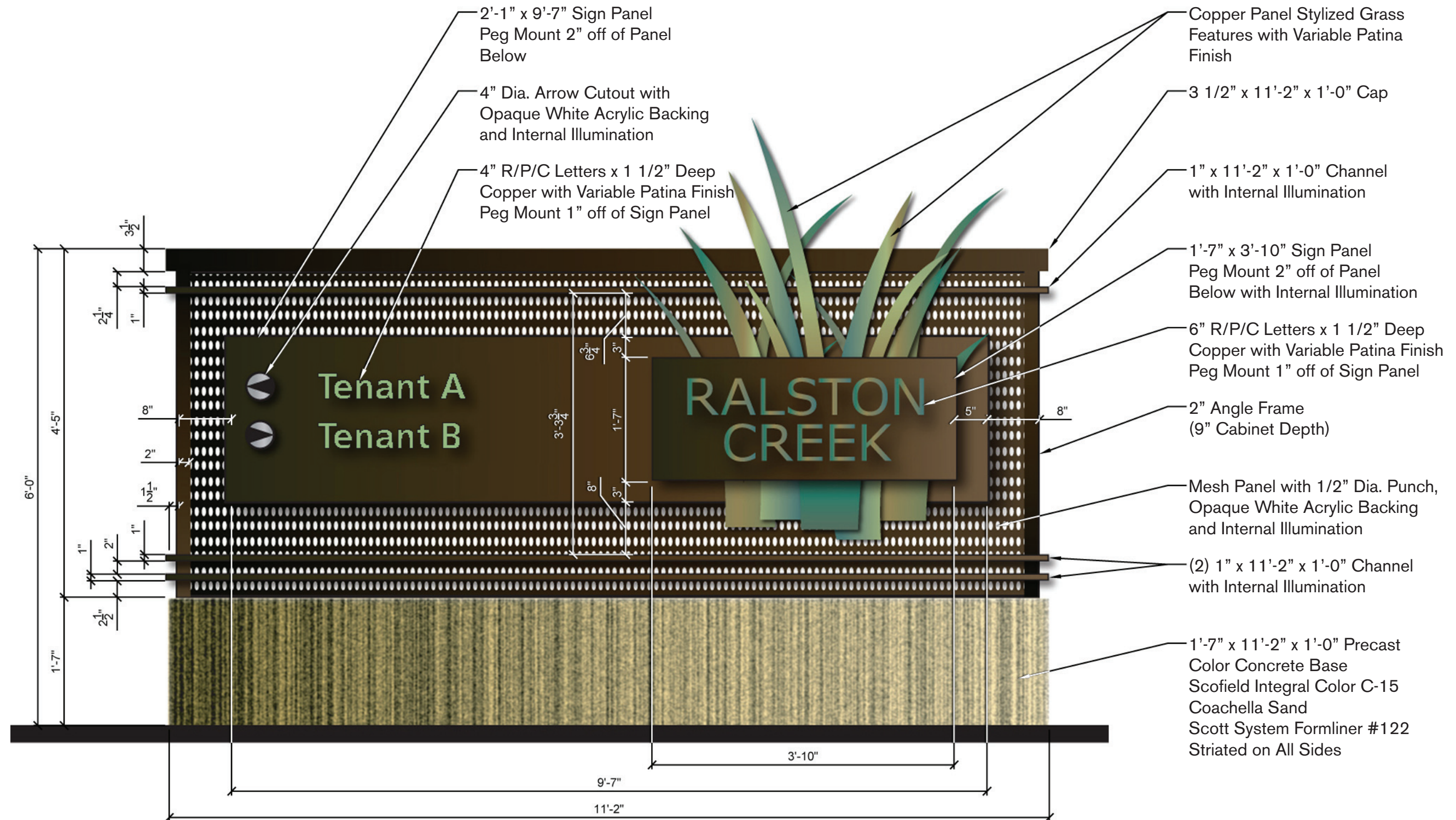
Primary Gateway Monument

3/8"=1'-0"



Tenant Sign Monument

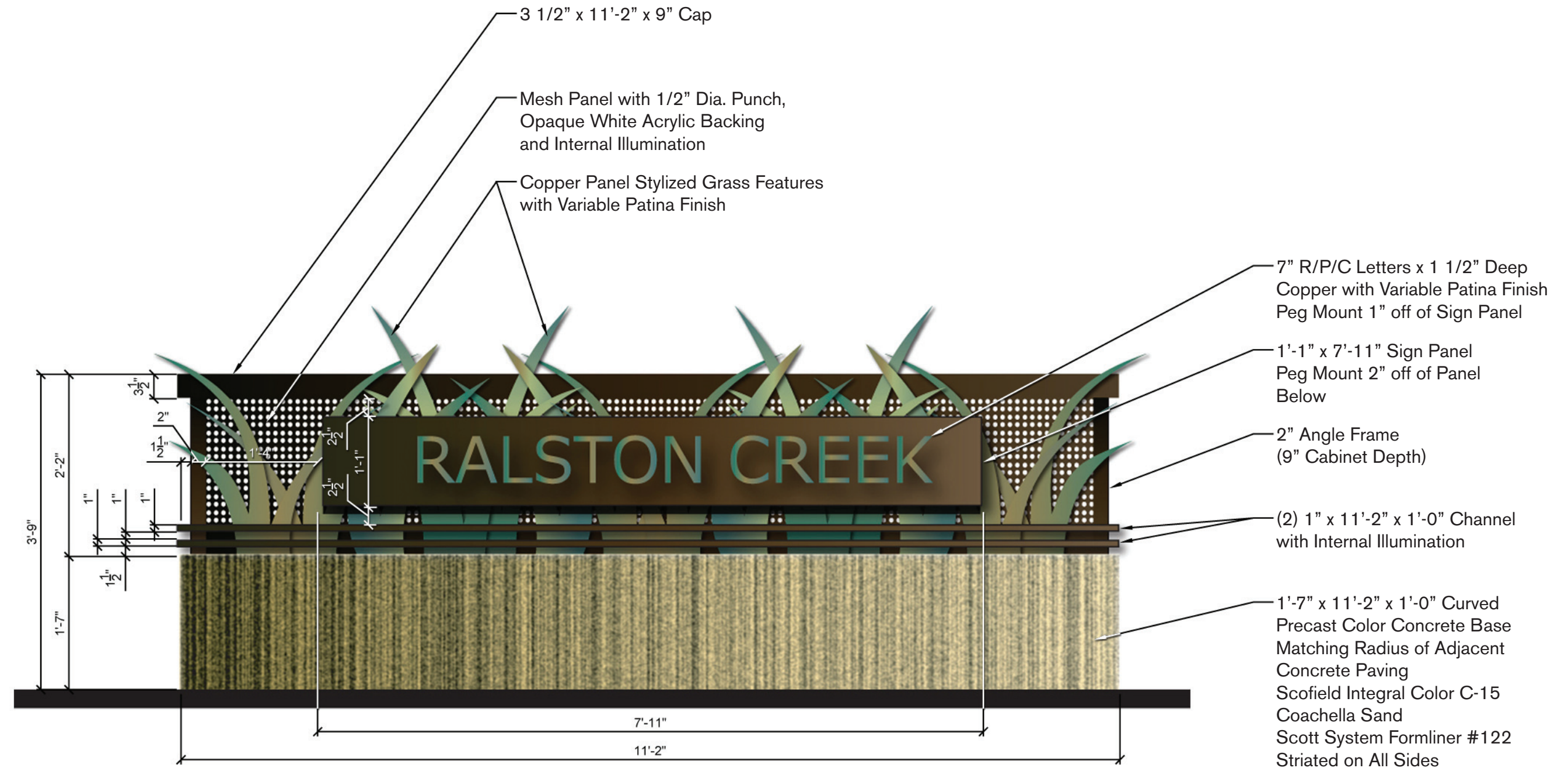
3/4"=1'-0"

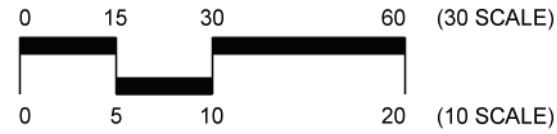


Secondary Gateway Monument

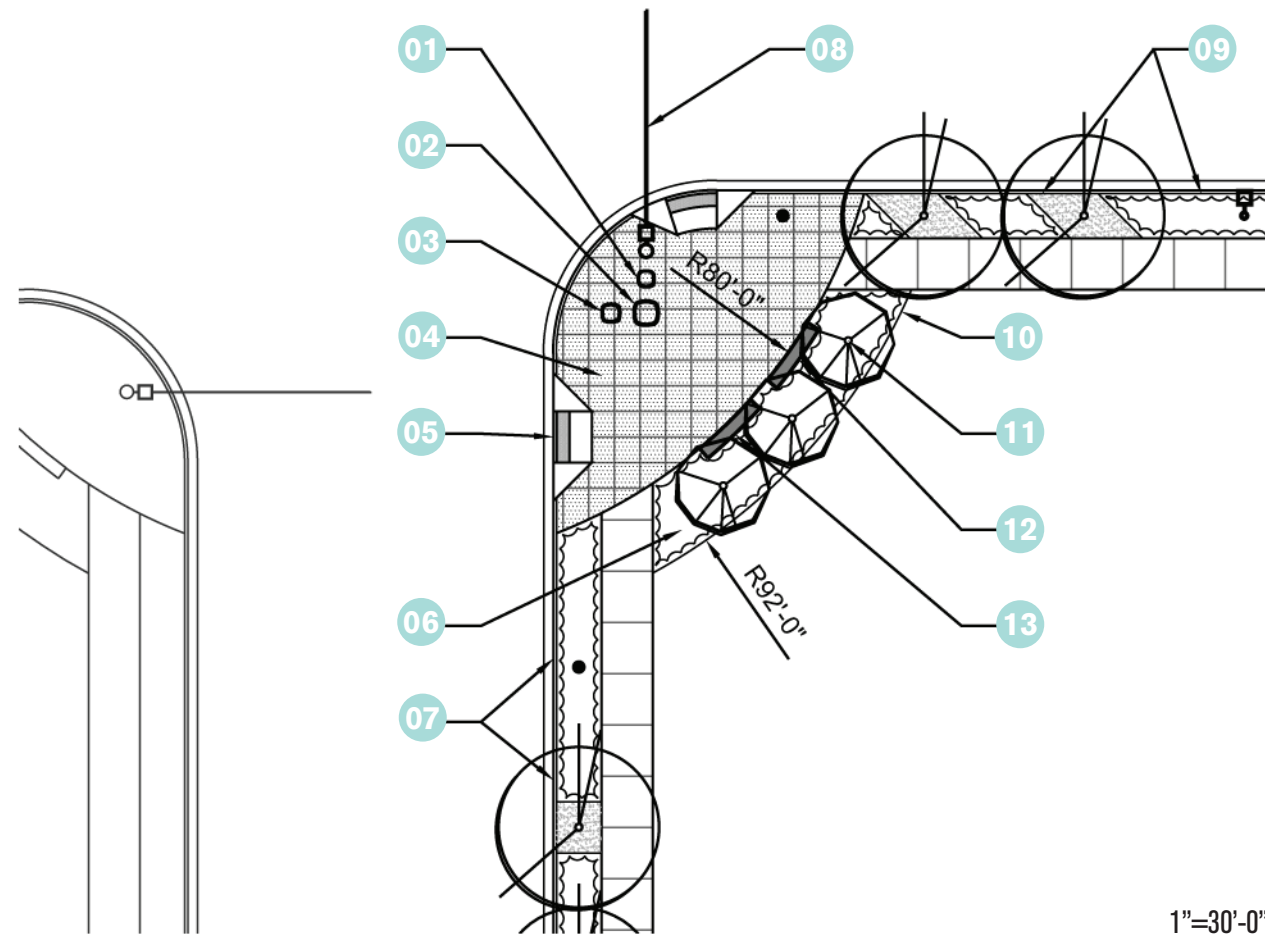
3/4"=1'-0"

28



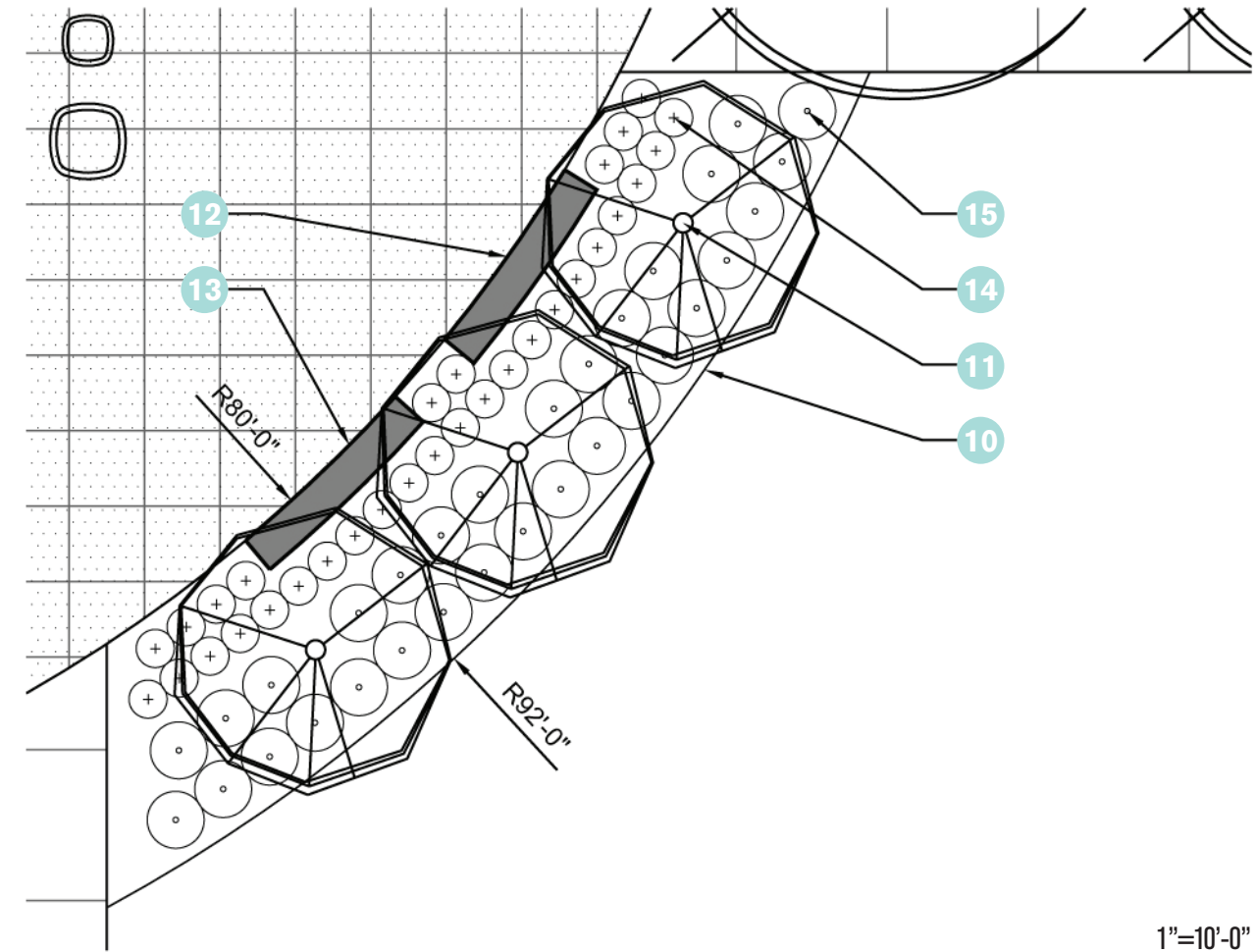


Secondary Gateway Corner Treatment



1"=30'-0"

01	Planter Pot Type 1	site furnishings & lighting section page 31
02	Planter Pot Type 3	site furnishings & lighting section page 31
03	Planter Pot Type 2	site furnishings & lighting section page 31
04	Colored Concrete Paving Type 1 (4' x 4' score pattern)	paving & surface materials section page 35
05	Concrete Curb Ramp (with detectable warning)	per city of arvada engineering code of standards & specifications
06	Planting Bed	see items 14 & 15 page 29
07	Streetscape Treatment	streetscape type d page 19
08	Traffic Signal	per city of arvada standards



1"=10'-0"

09	Streetscape Treatment	streetscape type a, b or c pages 7, 11 or 15
10	Steel Edging	
11	Royal Raindrops Crabapple	plantings section page 39
12	Secondary Gateway Monument (with Sign Panel)	monuments & corner treatment section page 23
13	Secondary Gateway Monument (without Sign Panel)	monuments & corner treatment section page 23
14	May Night Purple Salvia	plantings section page 39
15	Fountain Grass	plantings section page 39





30



SITE FURNISHINGS & LIGHTING

31

GENERAL NOTES:

1. Submit material, color and finish samples for review and approval prior to construction.
2. All site furnishings to be surface mounted.



Bench Type 1
SBTRO-72BA
6' Trio Bench, Backed, Extruded Aluminum Slats
Powder Coat Color to Match Landscape Forms Bronze
Forms + Surfaces
1-800-451-0410 or www.forms-surfaces.com



Bench Type 2
SBTRO-72NA
6' Trio Bench, Backless, Extruded Aluminum Slats
Powder Coat Color to Match Landscape Forms Bronze
Forms + Surfaces
1-800-451-0410 or www.forms-surfaces.com

Trash Receptacle
Poe with Standard Side Opening
Powder Coat Bronze
Include Liner at Installation
Landscape Forms
303-799-0028 (local representative) or www.landscapeforms.com



Bike Rack
Emerson
Powder Coat Bronze
Landscape Forms
303-799-0028 (local representative) or www.landscapeforms.com



Planter Pot

Larkspur

Type 1 - 48" Planter (32" x 32" x 48"), Color: Sandstone

Type 2 - 24" Planter (36" x 36" x 24"), Color: Sierra

Type 3 - 30" Planter (48" x 48" x 30"), Color: Pewter

Landscape Forms

303-799-0028 (local representative) or www.landscapeforms.com



Planter Pot Notes:

- Planter pots to be filled with potting soil and planted with annuals.
- Planter pots to be integrated into the overall automatic irrigation system on dedicated zones.
- Planter pots to include internal drainage systems or connection to underground storm drainage system to avoid leaking on adjacent hardscape.

Pedestrian Lighting

Alcott LED Luminaire and Pole

Powder Coat Bronze

Landscape Forms

303-799-0028 (local representative) or www.landscapeforms.com



Lighting Note:

- Conduct photometric study of proposed pedestrian and street lighting to determine most appropriate light fixture optics and light distribution options, street light pole height and street light arm length.
- Provide structural engineer stamped pole base footing designs for review and approval prior to construction.

Street Lighting

Luminaire: P32 PureForm LED

Powder Coat Color to Match Landscape Forms Bronze

Philips Gardco

303-573-0222 (local representative) or www.lightingproducts.philips.com

Pole: DS70 Round Tapered Steel Pole

Powder Coat Color to Match Landscape Forms Bronze

Valmont Structures

1-800-8325-6668 or www.valmontstructres.com





PAVING & SURFACE MATERIALS

35

GENERAL NOTES:

1. Submit material, color and finish samples for review and approval prior to construction.
2. Conduct soils report to determine required paving sub-base design.



Standard Concrete Paving
6" Thick, Standard Gray
Light Broom Finish with Saw Cut Control Joints



Colored Concrete Paving Type 1
6" Thick, Integral Color C-31 Shadow Slate
with Lithochrome Colorwax in Matching Color
Light Broom Finish with Saw Cut Control Joints
Scofield
1-800-800-9900 or www.scofield.com



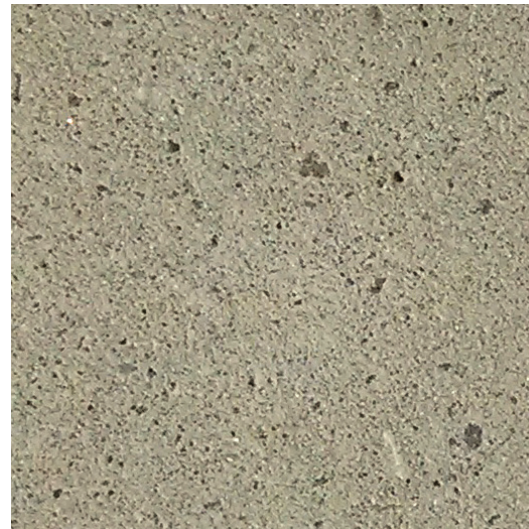
Colored Concrete Paving Type 2
6" Thick, Integral Color C-27 Westwood Brown
with Lithochrome Colorwax in Matching Color
Light Broom Finish with Saw Cut Control Joints
Scofield
1-800-800-9900 or www.scofield.com



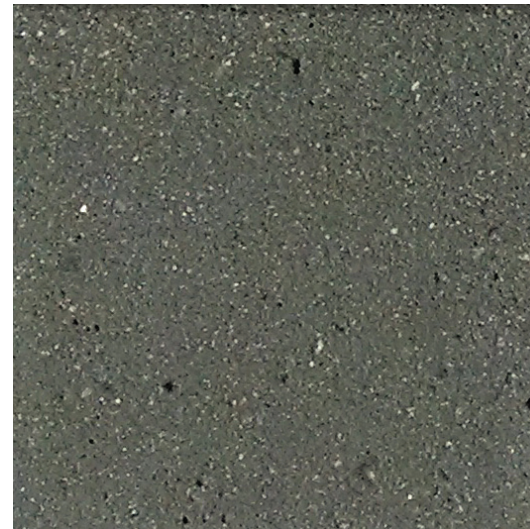
Colored Concrete Planter Curb
6" x 6" x 18" Poured in Place Concrete Curb at Planting Beds in Streetscape Type A
Integral Color C-15 Coachella Sand
Light Sand Finish with Saw Cut Control Joints
Scofield
1-800-800-9900 or www.scofield.com



Concrete Paver Type 1
3" x 18" x 4" Narrow Modular Paver
Almond #1806
Light Sandblast
Stepstone, Inc.
(310) 327-7474 or www.stepstoneinc.com



Concrete Paver Type 2
3" x 18" x 4" Narrow Modular Paver
Granada White #1801
Light Sandblast
Stepstone, Inc.
(310) 327-7474 or www.stepstoneinc.com



Concrete Paver Type 3
3" x 18" x 4" Narrow Modular Paver
Agave Green #1812
Light Sandblast
Stepstone, Inc.
(310) 327-7474 or www.stepstoneinc.com



Concrete Paver Pattern
Running Bond
30% Type 1, 50% Type 2 & 20% Type 3
Paver Types to be Placed Randomly



Mulch Type 1
Mountain Granite 3/4"
3" Depth over Soil Separating Fabric
Located in Ornamental Grass Planting Beds
Pioneer (Broomfield)
www.pioneersand.com



Mulch Type 2
Cheyenne Grey 1 1/2"
3" Depth over Soil Separating Fabric
Located in Shrub Planting Beds
Pioneer (Broomfield)
www.pioneersand.com

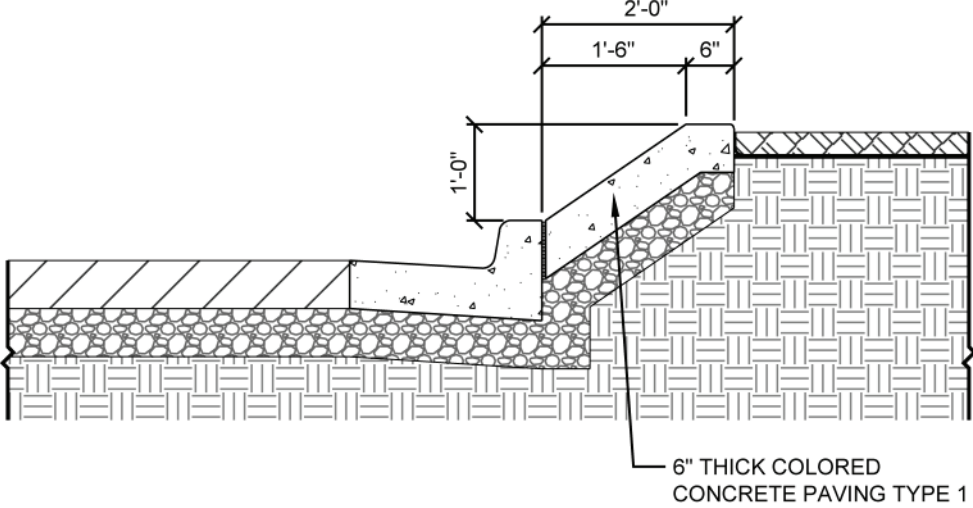


Median Treatment
Integral Color C-31 Shadow Slate with Lithochrome Colorwax in Matching Color
Alternating Light Broom Finish and Smooth Finish with 2' O.C. Tooled Control Joints
Scofield
1-800-800-9900 or www.scofield.com

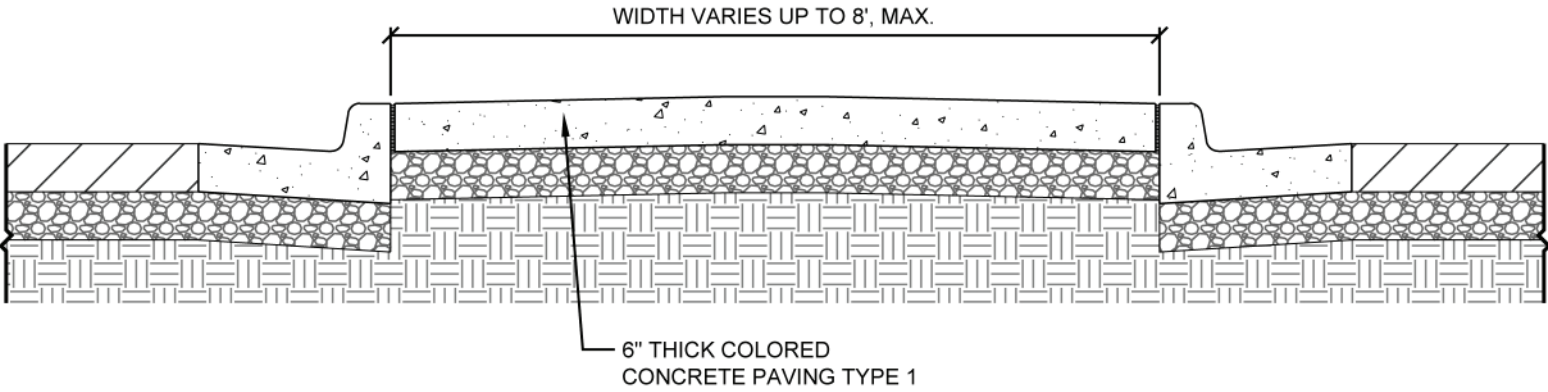


Crusher Fines
Butter Breeze
6" Depth Compacted and Stabilized Crusher Fines over
Soil Separating Fabric and 95% Compacted Sub-Grade
Renewable Fiber
1-800-888-0374 or www.renewablefiber.com

Raised Median Treatment



Level Median Treatment





38



PLANTINGS

39

GENERAL NOTES:

1. An automatic irrigation system is required for all trees, planting beds and planter pots.
2. Plant material was selected from the City of Arvada Water-Wise Plant List, City of Denver Approved Street Tree List and the Front Range Tree Recommendation List.
3. All plantings are subject to review and approval by AURA and the City of Arvada.
4. Planter pots to be planted with annuals.



STREET TREES

<i>Botanic /Common Names</i>	<i>Size</i>	<i>Spacing</i>
<i>Carpinus betulus</i> ‘Fastigiata’ Pyramidal European Hornbeam	2 I/2” cal.	As Shown
<i>Pyrus calleryana</i> ‘Autumn Blaze’ Autumn Blaze Pear	2 I/2” cal.	As Shown
<i>Quercus rubra</i> Northern Red Oak	2 I/2” cal.	As Shown

ORNAMENTAL TREES

<i>Botanic /Common Names</i>	<i>Size</i>	<i>Spacing</i>
<i>Malus</i> ‘Royal Raindrops’ Royal Raindrops Crabapple	2” cal.	As Shown



SHRUBS

<i>Botanic /Common Names</i>	<i>Size</i>	<i>Spacing</i>
<i>Caragana frutex</i> ‘Globosa’ Globe Russian Peashrub	5 Gal.	3’ o.c.
<i>Caryopteris</i> × <i>clandonensis</i> ‘First Choice’ First Choice Blue Mist Spirea	5 Gal.	3’ o.c.
<i>Cornus sericea</i> ‘Arctic Fire’ Arctic Fire Dogwood	5 Gal.	4’ o.c.
<i>Spirea japonica</i> ‘Anthony Waterer’ Anthony Waterer Spirea	5 Gal.	4’ o.c.

PERENNIALS

<i>Botanic /Common Names</i>	<i>Size</i>	<i>Spacing</i>
<i>Salvia nemorosa</i> ‘May Night’ May Night Purple Salvia	I Gal.	24” o.c.



ORNAMENTAL GRASSES

<i>Botanic / Common Names</i>	<i>Size</i>	<i>Spacing</i>	<i>Botanic / Common Names</i>	<i>Size</i>	<i>Spacing</i>
<i>Calamagrostis x acutiflora</i> 'Karl Foerster' Feather Reed Grass	I Gal.	36" o.c.	<i>Nassella tenuissima</i> Mexican Feather Grass	I Gal.	30" o.c.
<i>Festuca glauca</i> 'Boulder Blue' Boulder Blue Fescue Grass	I Gal.	24" o.c.	<i>Pennisetum alopecuroides</i> Fountain Grass	I Gal.	36" o.c.
<i>Helictotrichon sempervirens</i> Blue Avena Grass	I Gal.	30" o.c.	<i>Schizachyrium</i> 'Scoparium' 'Blaze' Blaze Little Bluestem Grass	I Gal.	36" o.c.

